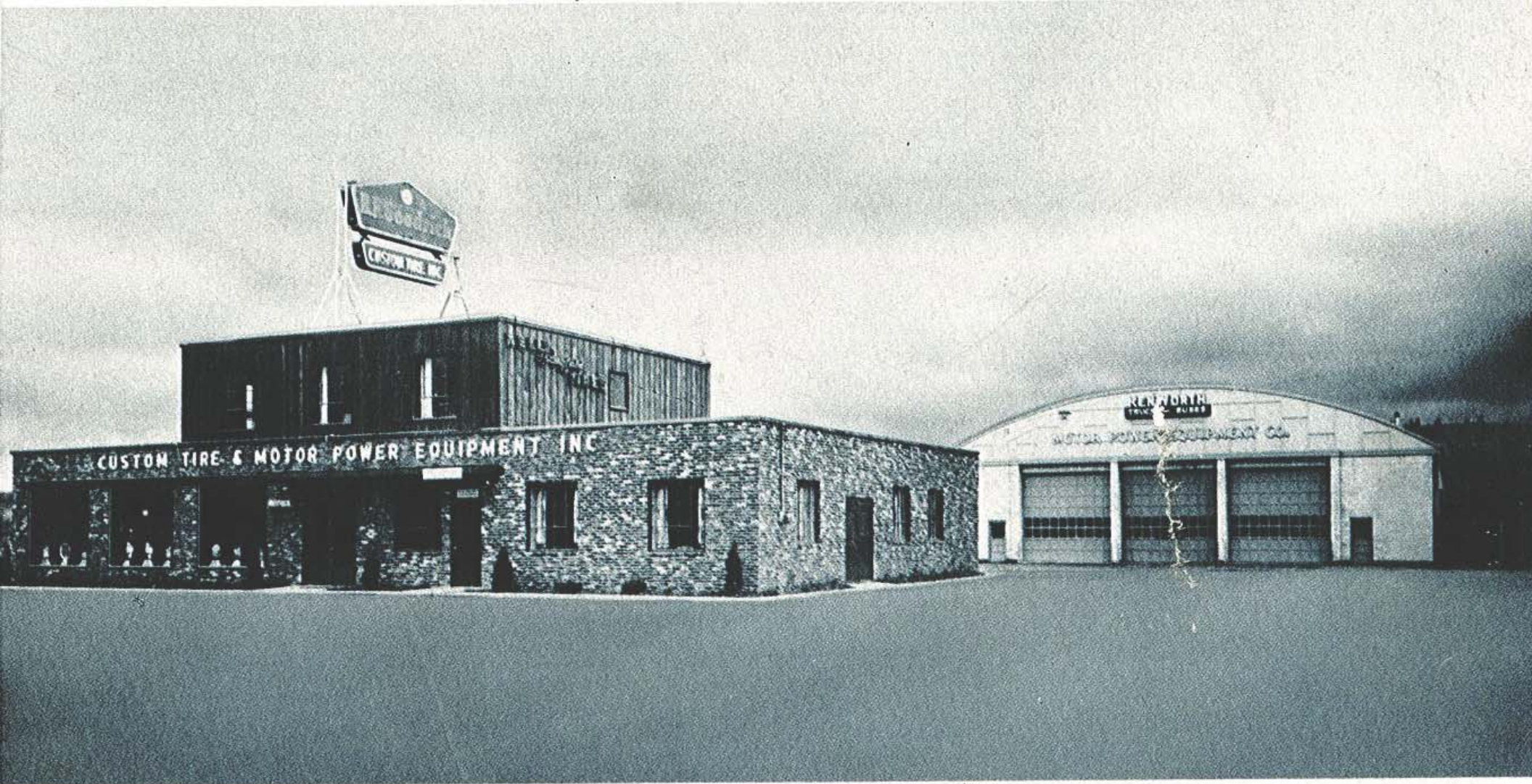


MOTOR POWER EQUIPMENT OPENS NEW BUILDINGS

JULY 1957- THIS ARTICLE FROM KENWORTH CRAFTSMAN MAGAZINE



Kenworth customers now are served from these new quarters at Billings by Motor Power Equipment Company, Kenworth distributor for Montana. Where U. S. Highways 10 and 87 intersect at the eastern city limits of Billings, the new location enables Motor Power Equipment to offer completely modern and enlarged sales and service facilities. The attractive two-story brick and redwood office building

seen here also houses the Kenworth truck sales rooms. The large pumice-block building is devoted to truck maintenance and service shops, as well as to service parts inventory. A third building houses the tire retreading and service plant. Motor Power Equipment's three new buildings are located on a conveniently situated paved site of more than two acres.